

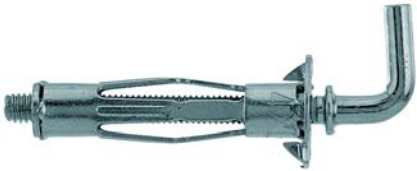
Metal cavity fixing HM

The rapid and reliable cavity-space fixing.

OVERVIEW



HM-S
with metric screw



HM-H
with angle hook



HM-SS
with hexagon headed screw

Suitable for:

- Gypsum plasterboard and gypsum fibreboards
- Chip boards

For fixing of:

- Pictures
- Lamps
- Skirting
- Electric switches
- Key boxes
- Small wall-mounted shelves
- Towel rails
- Lightweight mirror cabinets
- Curtain rails

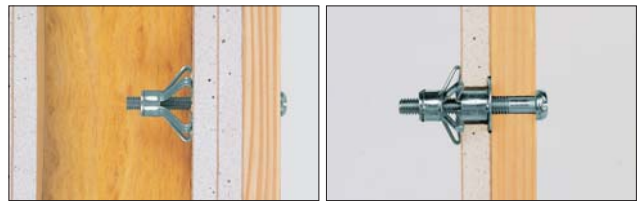
Cavity fixings

DESCRIPTION

- Zinc-plated cavity metal fixing with metric screw.
- The expanding arms spread out behind the board and press against a large surface.

Advantages/benefits

- Expanding arms and large contact radius increase load-bearing capability and security.
- Anti-rotation lock (distinctive claws) prevents rotation during installation.
- Surface-flush, permanently expanded fixing allows the attached item to be removed and refitted several times.
- The metrical thread enables easy screw-in and a tightly screw up of the fixing.



- Each dimension of the HM covers a wide range of board thicknesses.
- The fixing can be installed using installation pliers, a battery operated screwdriver or a normal screwdriver.

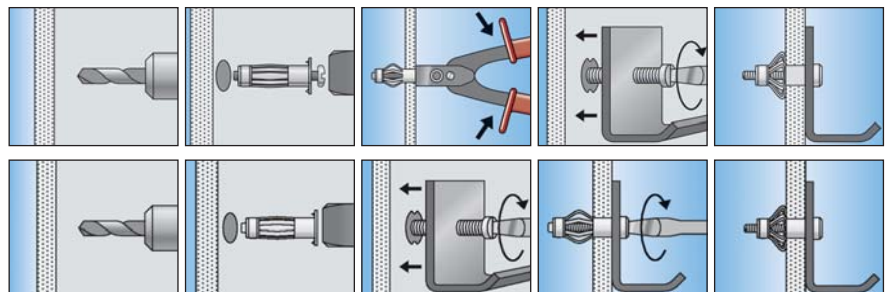
INSTALLATION

Type of installation

- pre-positioned installation

Installation tips

- Observe the exact stated drill diameter.
- When using a battery-operated or normal screwdriver for installation, it is essential to use the item being attached or another max. 6 mm plate as an anti-rotation lock.
- HM 8x55 SS must only be installed using the HM Z1 professional installation tool.



FIXING PRINCIPLES

In detail: The general principles for installation, the correct drilling procedure and much more on page 26.

TECHNICAL DATA



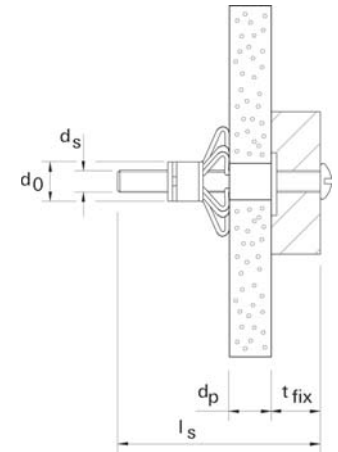
HM-S
with metric screw



HM-SS
with hexagon headed screw

Type	Art.No.	ID	drill-Ø		anchor length	screw	max. panel thickness	max. fixture thickness	qty. per box
			d_0 [mm]	t [mm]					
HM 4 x 32 S	62306	0	8	42	32	M 4 x 40	3 - 13	16	50
HM 4 x 46 S	62307	7	8	56	46	M 4 x 52	5 - 18	23	50
HM 4 x 59 S	62308	4	8	69	59	M 4 x 66	35 - 42	16	50
HM 5 x 37 S	62310	7	10	47	37	M 5 x 45	6 - 15	19	50
HM 5 x 52 S	62311	4	10	62	52	M 5 x 60	7 - 21	24	50
HM 5 x 65 S	62312	1	10	75	65	M 5 x 73	20 - 34	24	50
HM 6 x 37 S	62314	5	12	47	37	M 6 x 45	6 - 15	14	50
HM 6 x 52 S	62315	2	12	62	52	M 6 x 60	10 - 21	24	50
HM 6 x 65 S	62328	2	12	75	65	M 6 x 70	20 - 34	24	50
HM 6 x 80 S	62316	9	12	90	80	M 6 x 88	38 - 50	24	50
HM 8 x 55 SS	1) 62329	9	12	65	55	M 8 x 60	10 - 21	24	50

1) with hexagon headed screw, assembly only by using the professional installation tool HM Z 1



HM-H
with angle hook

Type	Art.No.	ID	drill-Ø		anchor length	angle hook	max. panel thickness	qty. per box
			d_0 [mm]	t [mm]				
HM 4 x 32 H	62318	3	8	42	32	4 x 40	3 - 13	50
HM 5 x 65 H	62326	8	10	75	65	5 x 70	20 - 34	50



HM Z 1
- the professional installation tool



HM Z 2
- the DIY installation tool

Type	Art.No.	ID	Qty. per box
HM Z 1	62320	6	1
HM Z 2	1) 62321	3	1

1) Not suitable for HM 8 x 55 SS.

LOADS

Mean ultimate loads and recommended loads

Fixing type	HM 4 x 32 S		HM 4 x 46 S		HM 5 x 37 S		HM 5 x 52 S		HM 5 x 65 S		HM 6 x 37 S		HM 6 x 52 S		HM 6 x 65 S		HM 8 x 55 SS	
	N_{rec}	N_U	N_{rec}	N_U	N_{rec}	N_U	N_{rec}	N_U	N_{rec}	N_U	N_{rec}	N_U	N_{rec}	N_U	N_{rec}	N_U	N_{rec}	N_U
Component dimensions and anchor characteristics																		
Drill hole diameter	d_0	[mm]	8	8	10	10	10	10	10	12	12	12	12	12	12	12	12	12
Drill hole depth	$\geq t$	[mm]	42	56	47	62	75	47	62	75	47	62	75	47	62	75	47	62
Board thickness	d_p	[mm]	3 - 13	5 - 18	6 - 15	7 - 21	20 - 34	6 - 15	10 - 21	10 - 21	20 - 34	6 - 15	10 - 21	10 - 21	20 - 34	6 - 15	10 - 21	10 - 21
Thickness of the fixture to be attached	t_{fix}	[mm]	16	23	19	24	24	14	24	24	14	24	24	24	24	24	24	24
Substrate																		
Gypsum plasterboard	9,5 mm	[kN]	0.15	0.49	0.15	0.49	0.15	0.53	0.15	0.53	-	-	0.15	0.44	-	-	-	-
	12,5 mm	[kN]	0.20	0.57	0.20	0.57	0.20	0.56	0.20	0.56	-	-	0.20	0.63	0.20	0.63	-	0.20
	19 mm (2 x 9.5 mm)	[kN]	-	-	-	-	-	-	0.25	0.62	-	-	-	0.25	0.77	-	-	0.25
	25 mm (2 x 12.5 mm)	[kN]	-	-	-	-	-	-	-	0.3	1.40	-	-	-	0.3	1.56	-	-
Chipboard	10 mm	[kN]	0.25	1.11	0.25	1.11	0.25	1.11	0.25	1.11	-	-	0.25	1.03	0.25	1.03	-	0.25
	13 mm	[kN]	0.25	1.17	0.25	1.17	0.25	0.76	0.25	0.76	-	-	0.25	0.92	0.25	0.92	-	0.25
Plywood	28 mm	[kN]	-	-	-	-	-	-	-	0.5	2.11	-	-	-	0.5	2.67	-	-
Hardboard	4 mm	[kN]	0.10	0.33	-	-	-	-	-	-	-	-	-	-	-	-	-	-
Light-weight building board made of wood wool	3 mm	[kN]	0.10	0.45	-	-	-	-	-	-	-	-	-	-	-	-	-	-
Fibre-cement board	16 mm	[kN]	-	-	0.05	0.19	-	-	0.05	0.33	-	-	-	0.05	0.37	-	-	0.05
	25 mm	[kN]	-	-	-	-	-	-	-	0.05	0.61	-	-	-	0.05	0.73	-	-
Gypsum fibreboard	8 mm	[kN]	0.25	1.42	0.25	1.42	0.25	1.48	0.25	1.48	-	-	0.25	0.94	-	-	-	-
	10 mm	[kN]	0.25	1.01	0.25	1.01	0.25	1.00	0.25	1.00	-	-	0.25	1.02	0.25	1.02	-	0.25
	15 mm	[kN]	-	-	0.25	1.49	0.25	1.09	0.25	1.09	-	-	0.25	0.66	0.25	0.66	-	0.25

Cavity fixings