

With the holidays just around the corner, and the possibility of guests staying over, here's an affordable cabinet to make that will ensure you have plenty of storage for towels and bathroom essentials.

Assembled using pre-cut and edged BisonLam in Super White, the project only takes approximately two hours from start to finish, and you have a super-stylish storage cabinet for all your bathroom essentials.

#### You will need:

16mm PG Bison BisonLam – Super White. Have all your boards cut and edged at your local Timbercity. You will also need to have holes cut for the hinges – see Point 5 below.

[2] 400 x 400mm – top and bottom

[2] 400 x 1900mm - sides

[1] 400 x 1932mm - door

[4] 368 x 400mm x 12mm

Supawood – shelves

[1] 396 x 1928mm Masonite backing board - white

[1] 1m of 50 x 50mm pine - legs

[24] Adjustable shelf supports

[3] Hinges – full overlap and screws

Wood screws

Alcolin Contact Adhesive

Alcolin Fast Set Wood Glue

[6] 150 x 150mm mirrors

[1] Handle

TOOLS: Drill/Driver, screwdriver and drill bits, Bosch Tacker or staple gun, Bosch Multifisander or sanding paper, Tape measure and pencil

**easy project**



## Bathroom Storage Cabinet

**Now you can afford to get your bathroom organised with this easy project!**

### ***Towels and accessories provided by Home Comforts***

#### **Here's how:**

1. Lay out all the pieces on a flat level surface. Drill pilot holes through the base and top into the sides, and countersink. Screw the base and the top to the sides.

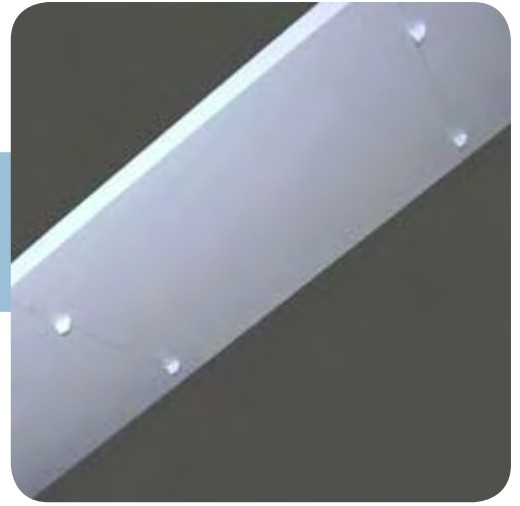


- Depending upon how many shelves you require, measure and mark equal measurements down the left and right of each side. Drill to a depth of 6mm with a 6mm drill bit. These holes are for the adjustable shelf holders.

**DIY Tip:**

**Use a piece of masking tape wrapped around the drill bit to indicate the depth of the hole to be drilled.**

- Apply the white masonite board face down on the back of the cupboard. Use a Bosch Tacker or staple gun to fasten the masonite to the back of the cupboard at the sides, top and bottom.
- From the 50mm x 50mm pine, cut [4] sections of 50mm height for the legs. Use a Bosch Multisander or sanding paper of 180-grit to sand the tops, bottoms and smooth all the edges. Apply a bead of wood glue to the tops of all the legs and use [4] screws to attach the legs to the base of the cabinet.



- Have your local Timbercity cut out holes for the three hinges. Screw the hinges onto the back of the door in the cut holes.



**DIY Tip:**

**Have someone hold the door while you mark positions for holes for hinges on the inside of cabinet frame. Screw hinges to the frame and make any adjustments to hinges for a flush fit.**

- Use a straightedge to position the mirror tiles at an equal distance and centrally down the center of the door panel. Use a pencil to mark around the mirrors and place aside. Apply Alcolin Contact Adhesive to the front of the door, where marked, and to the back of the mirror tiles. Leave to cure until no longer tacky, and then carefully position the mirror tiles onto the door.

- Attach the handle, move into position, and start filling up with your towels, toiletries or bathroom essentials.

