



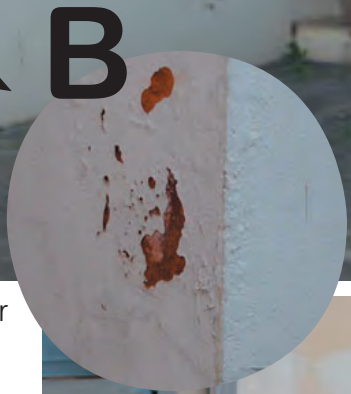
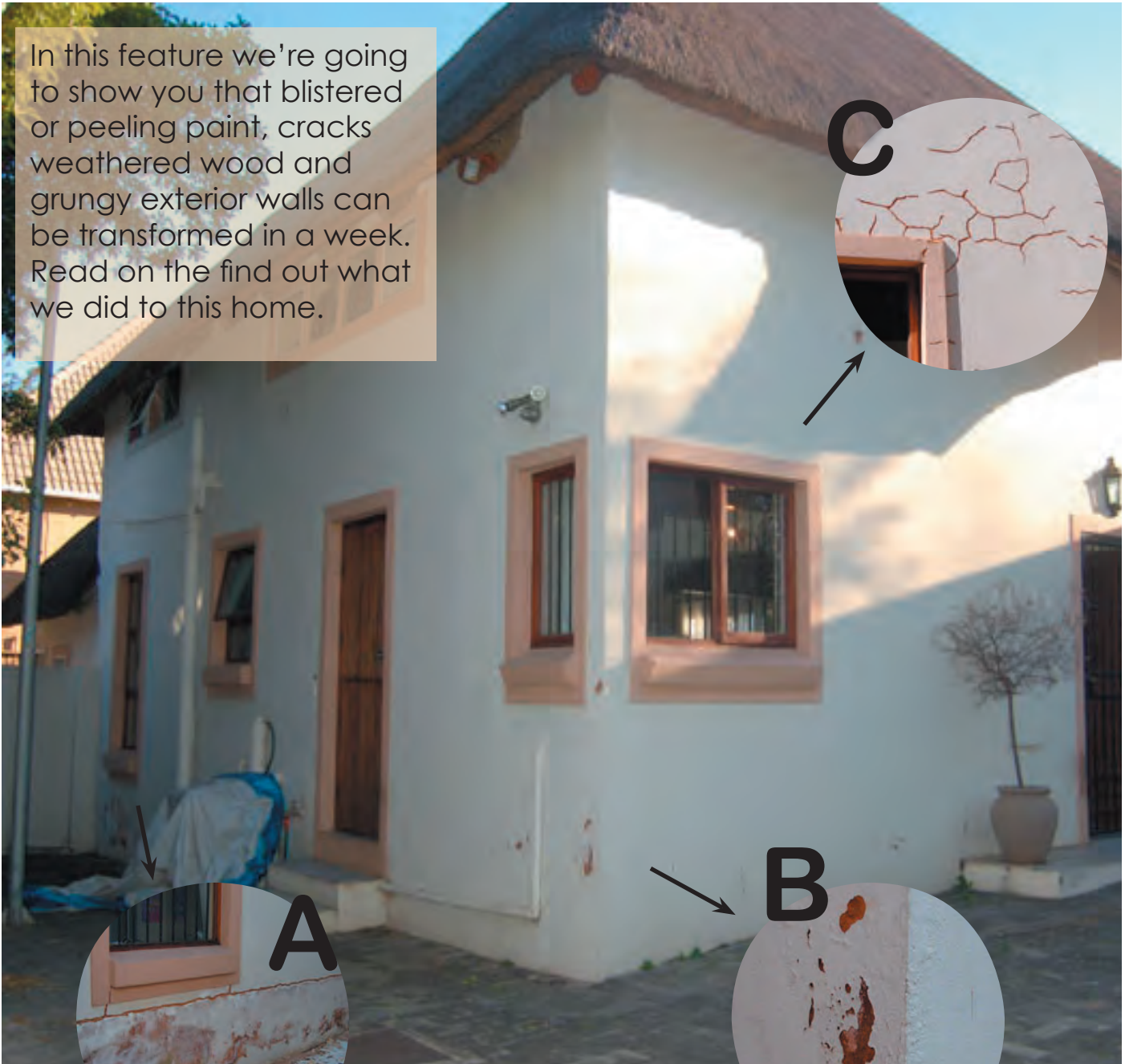
a place to call *home*

Your home should look as good on the outside, as it does on the inside. With the correct preparation you can have a good looking house - for longer.

Thanks to Prominent Paints and Decorating Centre, we transformed a drab, weather-worn exterior into an attention-grabbing home.



In this feature we're going to show you that blistered or peeling paint, cracks weathered wood and grungy exterior walls can be transformed in a week. Read on to find out what we did to this home.



THIS PAGE: Before, during & after preparation.

This property needed some intensive TLC to turn it into a good-looking home on the outside.

With all products supplied by Prominent Paints and Decorating Centre, we took one week from start to finish.



A. Damp on walls

The problem is easily identified by bubbling or peeling paint in the area.

In our project the house is situated on a slope, with the foundation being more exposed at the back of the house and resulting in damp below the floor slab.

At the front of the house the land is sloped towards the walls, putting more of a strain on the existing DPC and resulting in rising damp from a buildup of water. Additionally, the garden beds are situated against the walls and are slightly higher than the DPC.

Solution

All loose and flaky paint was removed along the damaged level using a paint scraper. The surface of the plaster was brushed down with a wire brush to remove dry, sandy rendering. Luckily the damage was not too extensive and only chasing out and repairing cracks needs to be done.



At the front of the house the paint was removed as above. To prevent future damage it will be necessary to lower the level of the soil so that it sits lower than the DPC.

B. Loose or crumbling plaster



In an older home you will frequently come across loose or crumbling plaster that eventually falls off the wall. In this newer home the plaster has become very soft underneath the paint, possibly as a result of incorrect mix when applied.

Solution

Remove as much loose or crumbly plaster as possible from the area with a wire brush.

If you need to reapply plaster, mix to the required consistency. [Click here for instructions on ratios for exterior plaster.](#)



Spatterdash is applied to the surface to be repaired (one part of cement to one and a half parts of coarse sand with enough water for a slow pourable consistency). The mixture is thrown forcibly on to the wall, using a brush with long, stiff bristles. The spatterdash should cover the damaged surface completely and form a rough texture. Allow to dry for at least three days.



See instructions on next page for apply plaster over the spatterdash.

Using a paintbrush, apply Prominent Bonding Liquid to the plaster surface. **Do read the instructions**, as the Bonding Liquid needs to be mixed with thinners before use.





Plastering

Using a rectangular plasterer's trowel, push plaster onto the wall using heavy pressure to compact the plaster and ensure full contact with the surface. The plaster layer should be slightly higher than the wall surface. Once the plaster starts to stiffen, it should be struck off to a level surface using a light striker board.

Use a wood float to remove ridges made by the striker board. At the same time fill in any depressions and float flush with the surrounding plaster.



C

B. Cracks

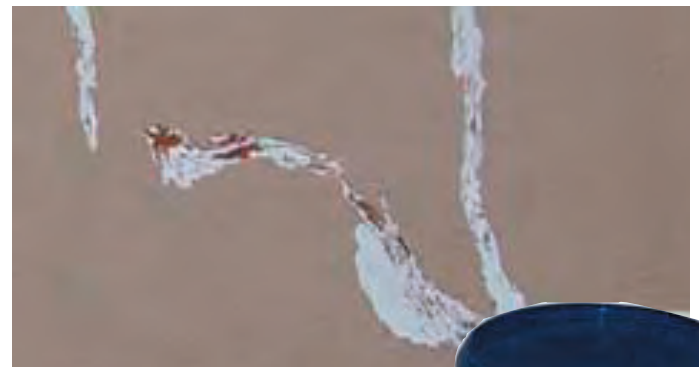
Cracks in exterior walls are common and easily repaired.

Solution

Use a hammer and chisel to 'chase' along the length of the crack, widening slightly to provide a better surface for the crack filler to adhere to.

Prominent ProGold Crack Filler is ready mixed and easy to apply with a paint scraper or spatula.

For deep cracks, apply in layers of 5mm thickness, allowing each layer to dry thoroughly before applying the next layer - until level with the surrounding wall.



Lightly sand for a smooth finish, or use a sea sponge or stiff brush to stipple or brush the surface of the crack filler - while wet - to match the an existing textured finish.

